



Washington State Department of
Early Learning

In Washington, we work together so that all children start life with a solid foundation for success, based on strong families and a world-class early learning system for all children prenatal through third grade. Accessible, accountable, and developmentally and culturally appropriate, our system partners with families to ensure that every child is healthy, capable and confident in school and in life.

Race to the Top—Early Learning Challenge ELAC



Bonnie Beukema, Assistant Director

August 31 2011

www.del.wa.gov

Presentation Today:

- RTT-ELC: How it Works
- A Strong Foundation:
 - Washington Early Learning Plan
 - 2011 Early Learning Partnership Priorities
- RTT-ELC Draft Theory of Change
- RTT-ELC Draft Core Strategies
- Letters of Support
- Questions & Discussion

What is the Race to the Top – Early Learning Challenge?

- A voluntary federal initiative that helps states build more efficient and effective early learning systems for infants, toddlers, and preschoolers—and their families
- Not about program expansion
- Focuses on improving, linking, & aligning
- Honors gubernatorial leadership

What is the Race to the Top – Early Learning Challenge?

- Addresses needs of the most vulnerable children
- Strengthens infrastructure: standards, assessment, data systems
- Supports quality and accountability through Quality Rating and Improvement Systems (QRIS)
- Builds a quality workforce by linking professional development to QRIS

How It Works: Timeline and Funding Levels

- **Grant period:** December 31, 2011 to December 31, 2015
- **Funding Levels:** (based on population of low-income young children)
 - Up to \$100 million CA, FL, NY, TX
 - Up to \$70 million AZ, GA, IL, MI, NC, OH, PA
 - Up to \$60 million AL, CO, IN, KY, LA, MO, NJ, OK, PR, SC, TN, VA, WA, WI
 - Up to \$50 million AK, AR, CT, DE, DC, HI, ID, IA, KS, ME, MD, MA, MN, MS, MT, NE, NH, NM, NV, ND, OR, RI, SD, UT, VT, WV, WY
- **Timeline:** Applications due October 19, 2011
- **Total Funding Available for the Challenge:** \$500 million

How It Works: Challenge Priorities

Absolute Priority/Must Address:

Promoting School Readiness for Children with High Needs

Competitive Priority/Adds Points to Scoring:

1. Including all Early Learning and Development Programs in the Tiered Quality Rating and Improvement System
2. Understanding the Status of Children's Learning and Development at Kindergarten Entry

Invitational Priority/No Points to Scoring:

1. Sustaining Program Effects in the Early Elementary Grades.
2. Invitational Priority—Encouraging Private-Sector Support.

How it Works: Areas that Must Be Addressed

1. *Successful State Systems* that include: demonstrated commitment to early learning and development; rationale for reform; aligned and coordinated system; and sustainable budget.
2. *High-Quality, Accountable Programs* with a statewide, validated QRIS and access to high quality programs for *children with high needs*.
3. *Promoting Early Learning and Development Outcomes for Children* through early learning and development standards, comprehensive assessment system, screening and addressing health, behavioral and developmental needs and family engagement.
4. *A Great Early Childhood Education Workforce* that includes a clear ladder of knowledge and competencies and support for providers to move up that ladder.
5. *Measuring Outcomes and Progress* including kindergarten entry assessment and/or building an early learning data system.

How it Works: Priorities, Requirements, & Selection Criteria

Early Learning Challenge Points Overview	Points Available	Percentage
1. Successful State Systems	65	23
2. High-Quality, Accountable Systems	75	27
3. Promoting Early Learning & Development Outcomes for Children	60	21
4. A Great Early Childhood Education Workforce	40	14
5. Measuring Outcomes and Progress	40	14
Total points available for selection criteria	280	100
Competitive Priority 1: Including all early learning & development programs in the QRIS	10	
Competitive Priority 2: Understanding status of learning & development at Kindergarten entry	10	
Grand Total	300	

Using the Early Learning Plan: Guiding Principles

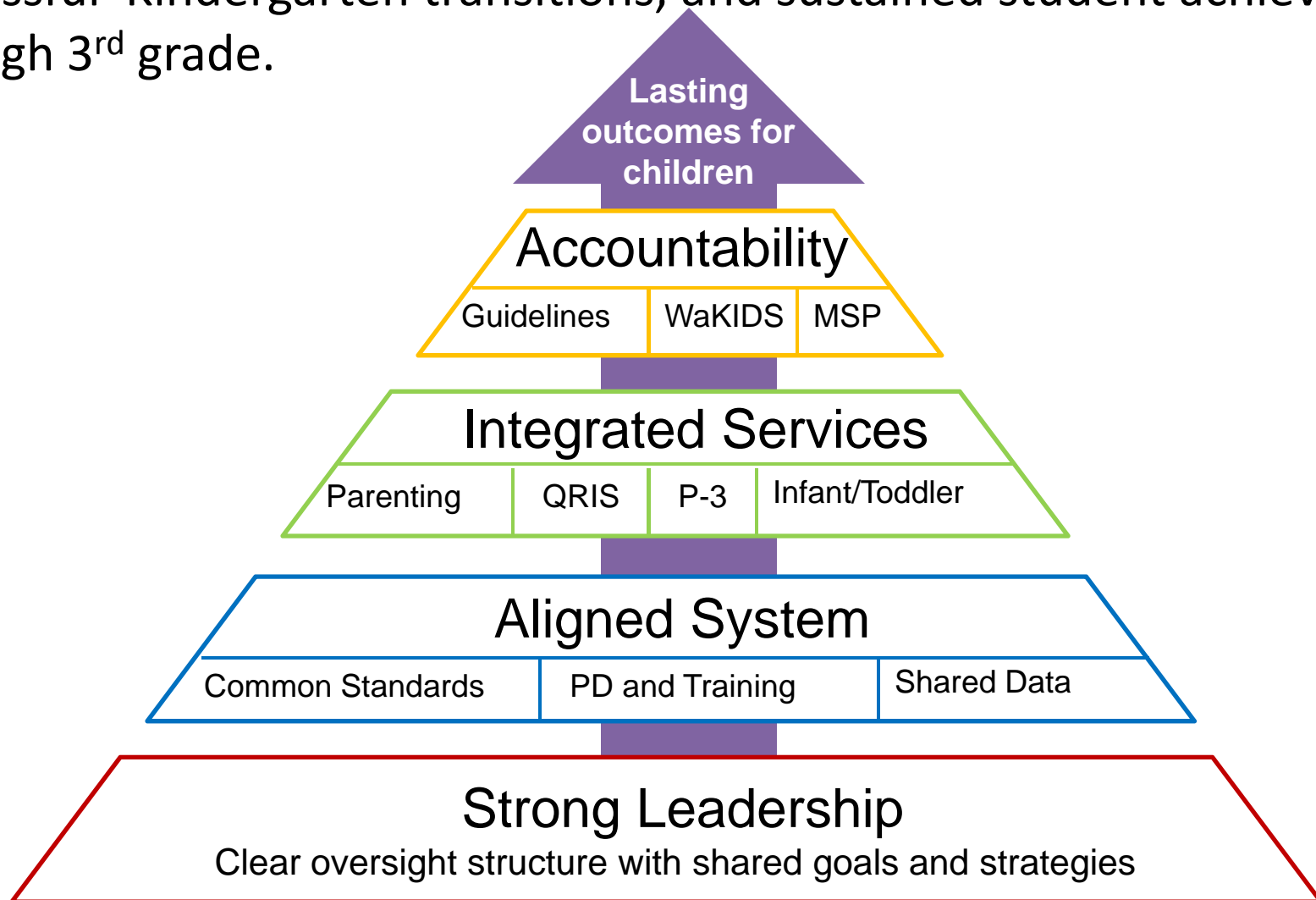
1. **Be child-focused and family-centered**. Promote meaningful partnerships with parents and families, since they are children's first teachers.
2. Promote alignment of early learning services and programs as a **continuum** that is comprehensive, supports whole child development, and is available to all children.
3. Be flexible, **culturally responsive**, accessible, relevant and respectful, and reflect the needs of local communities and individual children.
4. Be **developmentally appropriate** and, where applicable, evidence based (as available), and address each stage of child development from prenatal through third grade.
5. **Build on strengths**—of children, parents, families, providers, programs, communities and prior planning efforts, such as Kids Matter and Washington Learns.
6. Develop a **tiered approach** to addressing the early learning needs of all children in the state, identifying those strategies that apply to all, some and few children.
7. Provide supports, services and programs for **at-risk children and families** to close the preparation gap.
8. Promote **high-quality** early learning to increase school readiness and success in school and in life.
9. Include **professional development** and support for early learning and care providers.
10. Promote **transparency and accountability** in all policies, services and programs.
11. Provide ways to **measure progress** over time.
12. Identify funding sources and promote **adequate financing** of the system.
13. Provide for meaningful stakeholder **review and comment** on the Washington State Early Learning Plan as it is being developed and on the system's performance over time.

Using the Early Learning Plan to shape our RTT-ELC proposal:

2011 Partnership priorities strategies	
Ready and Successful Children	<ul style="list-style-type: none"> • Make Home Visiting Available to At-Risk Families • Expand and enhance ECEAP • Increase Use of Early Literacy Services and Programs
Ready and Successful Parents, Families, and Caregivers	<ul style="list-style-type: none"> • Provide More Parenting Learning Opportunities
Ready and Successful Early Learning Professionals	<ul style="list-style-type: none"> • Implement Quality Rating and Improvement Systems (QRIS)
Ready and Successful Schools	<ul style="list-style-type: none"> • Implement Kindergarten Readiness Assessment (WaKIDS) • Implement Phased-In Full-Day Kindergarten • Align Pre-K and K-3 Instructional & Programmatic Practices
Ready and Successful Systems and Communities	<ul style="list-style-type: none"> • Build Statewide Infrastructure for Partnerships and Mobilization • Expand P-20 Longitudinal Data System • Revise and Promote Use of Early Learning and Development Guidelines

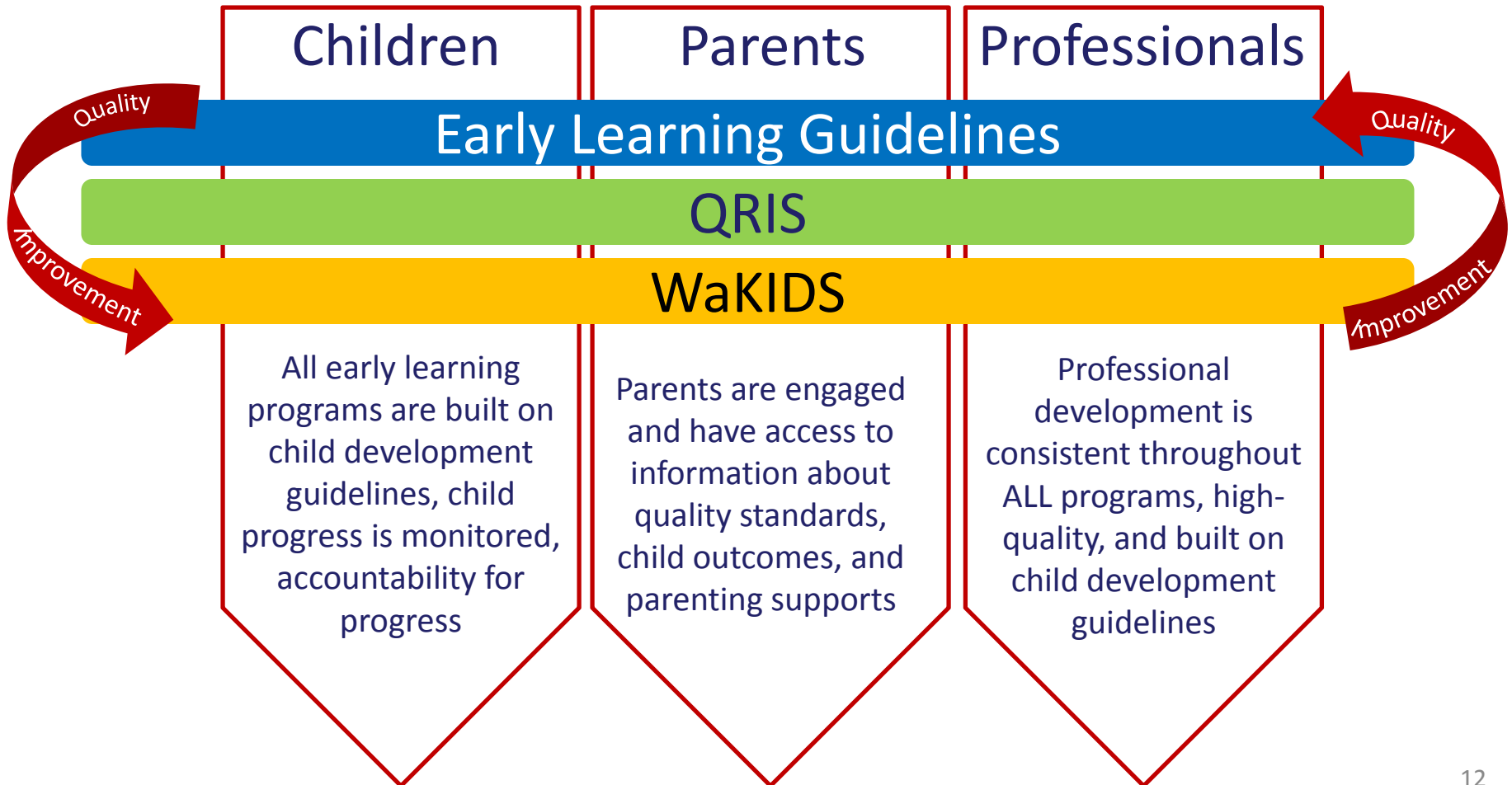
= A Ready and Successful State

Theory of Change: Support children’s development and learning, successful Kindergarten transitions, and sustained student achievement through 3rd grade.



Core Strategies:

Reach all programs with consistent mechanisms to improve quality, track progress, and measure child outcomes.



Letters of Support: We need your help!

Strong Letters of support are a required component of successful RTT-ELC grant applications and must illustrate:

- Broad, concerted support for our application
- Strong partnerships in place

Letters of support should:

- Be tailored, unique, and authentic.
- Clearly communicate strong support for Washington's RTT-ELC application.
- Provide specific examples of how your organization will help promote and implement the theory of changes and core strategies outlined in Washington's RTT-ELC application.
- Be concise (limited to 1-2 pages in length).

Powerful letters communicate the work you are already doing to promote early learning.

Timeline for Support Letters

1. Email RTT-ELC@del.wa.gov to let us know that you will develop a letter of support.
2. Draft letter of support to DEL by Monday, September 19th.
3. DEL will give you feedback within one week.
4. Final letters to DEL by Friday, October 7th.



Washington State Department of
Early Learning

Questions & Discussion

Bonnie Beukema

Assistant Director, Outcomes & Accountability

bonnie.beukema@del.wa.gov

www.del.wa.gov