



Washington State Department of
Early Learning

Early learning updates

House Early Learning & Human Services Committee

October 19, 2011



Early Learning Plan vision statement

In Washington, we work together so that all children start life with a solid foundation for success, based on strong families and a world-class early learning system for all children prenatal through third grade. **Accessible, accountable, and developmentally and culturally appropriate**, our system partners with families to ensure that every child is healthy, capable and confident in school and in life.



Today

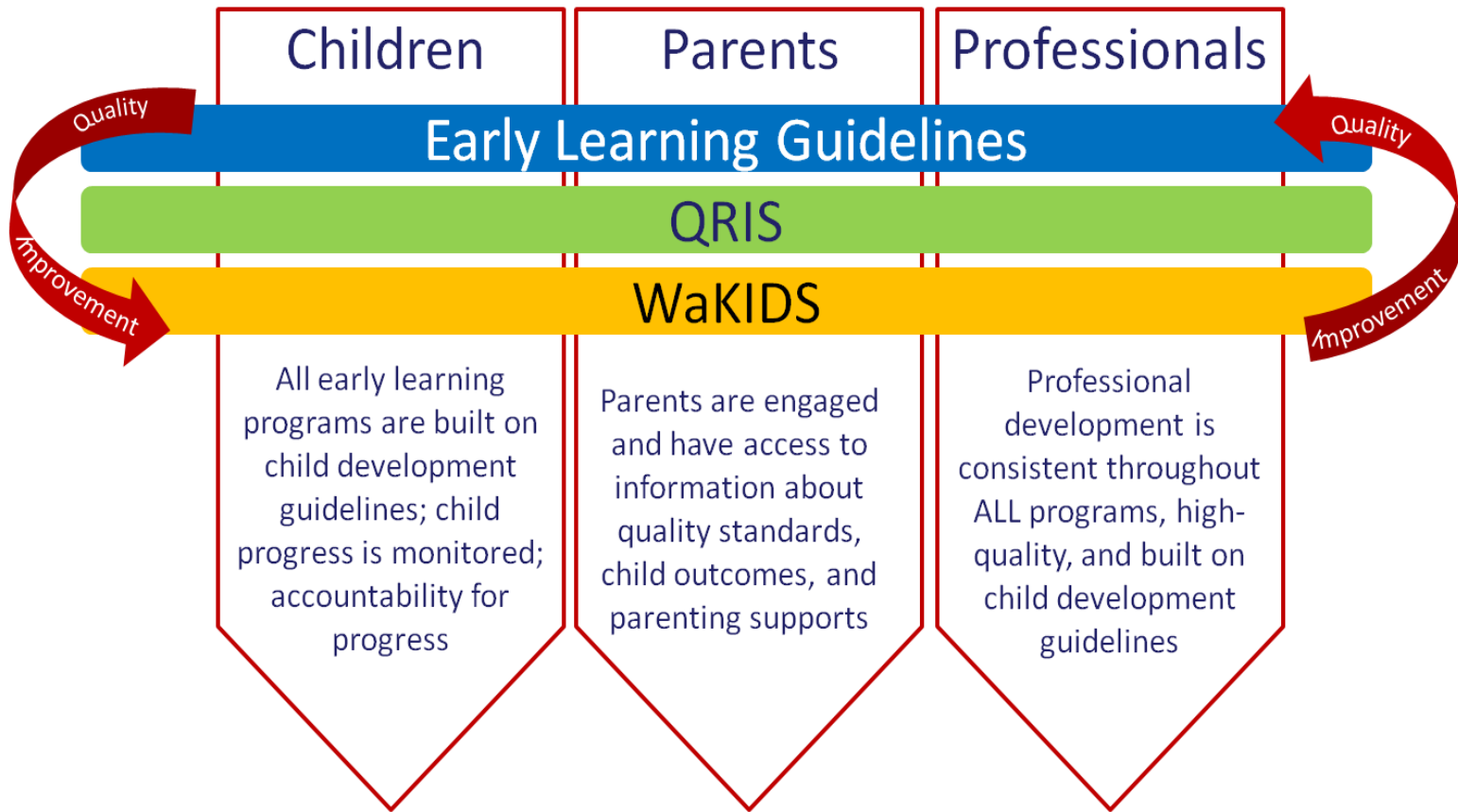
- ✓ Race to the Top-Early Learning Challenge Grant
- ✓ Quality Rating and Improvement System
- ✓ Implementation of 2011 legislation
- ✓ Child care updates
- ✓ Home visiting
- ✓ Frontiers of Innovation partnership

Race to the Top—Early Learning Challenge

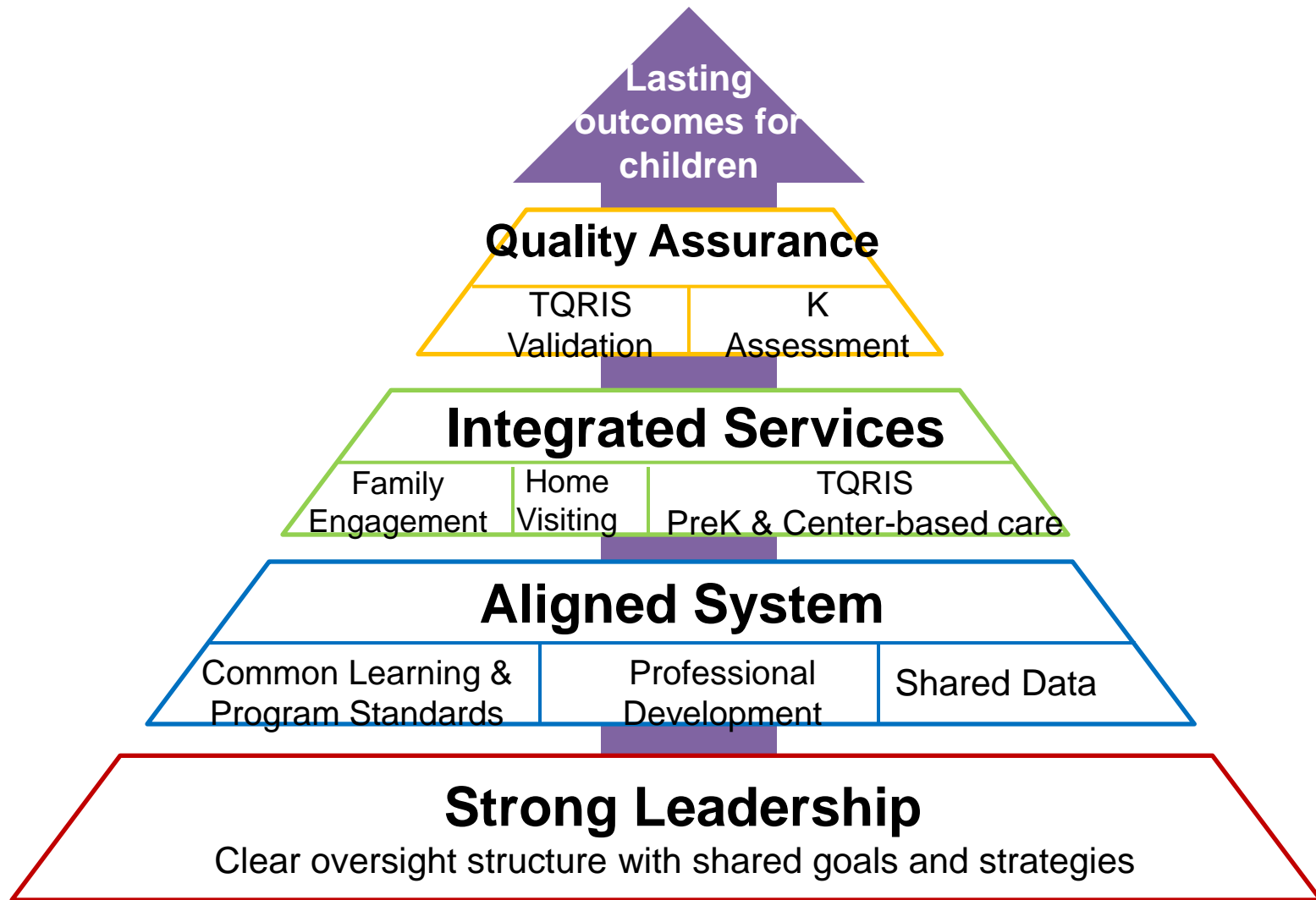
www.del.wa.gov/government/racetotop

Race to the Top-Early Learning Challenge

- ✓ Just submitted our state application yesterday!
- ✓ Started with the Early Learning Plan: the basis
- ✓ RTT-ELC advisory group (25 members)
- ✓ Early Learning Advisory Council (ELAC)
- ✓ Small group meetings:
 - Preschool-third grade alignment
 - Home visiting
 - Professional development
 - Advocates
 - Quality Rating and Improvement System



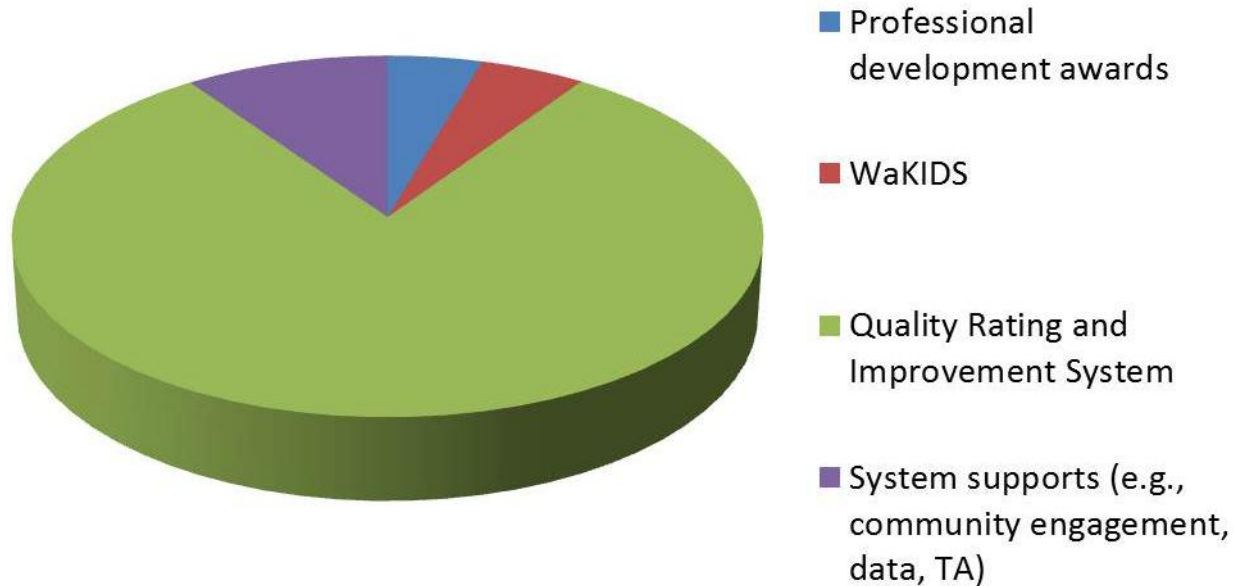
Washington's early learning theory of change



What's in the application?

- ✓ Washington Kindergarten Inventory of Developing Skills (WaKIDS)
 - ✓ Reach all kids by 2014-15 school year
- ✓ Quality Rating and Improvement System (QRIS)
 - ✓ At scale statewide by 2015, support quality improvements at all levels
- ✓ Professional development incentives
 - ✓ Reward, incentivize and support professional development
- ✓ Community and family engagement
- ✓ Strengthened data system

What would \$60 million “buy” WA?



- ✓ Application needed to demonstrate state commitment to early learning
- ✓ Washington’s proposal is lean, and relies most heavily on repurposing existing dollars.
- ✓ Does not require the state to increase funding for early learning during the grant period (1/1/2012 through 12/31/2015)
- ✓ Some modest increases in state revenue are projected after the grant period.

RTT-ELC budget—QRIS

Rating & Monitoring

\$6.3M

Support to get everyone into the QRIS system and move them up to a Level II over time

Coaching, Training, & TA

\$19.2M

Improvement activities

Quality Improvement Awards

\$7.75M

Rewards for quality in levels III-V

Training Hub Incentive Awards

\$8.9M

Reward to HS/ECEAP for opening up trainings to local child care

Program Evaluation

\$1.6M

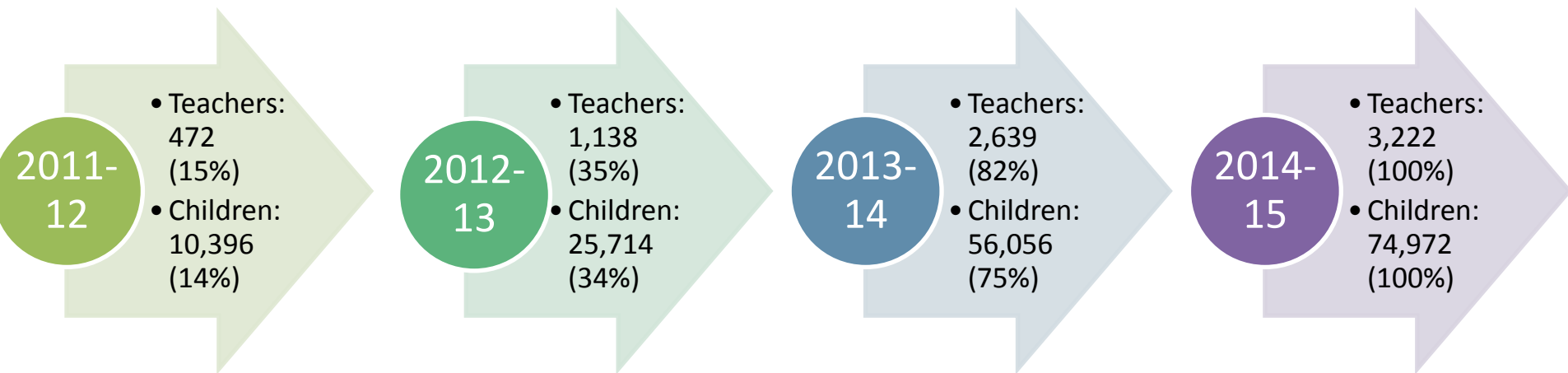
5% of program costs to improve system

RTT-ELC budget—Other

WaKIDS	\$2.3M
Scale WaKIDS by 2014-15	
Professional Development Incentives	\$5.75M
Encourage participation in MERIT, level awards for educational attainment	
System Supports	\$8.2M
Community Engagement	\$600K
Information/Material Dev	\$2M
Data	\$4.5M
Administration	\$700K
T/A (Required minimum)	\$400K

What does success look like? WaKIDS

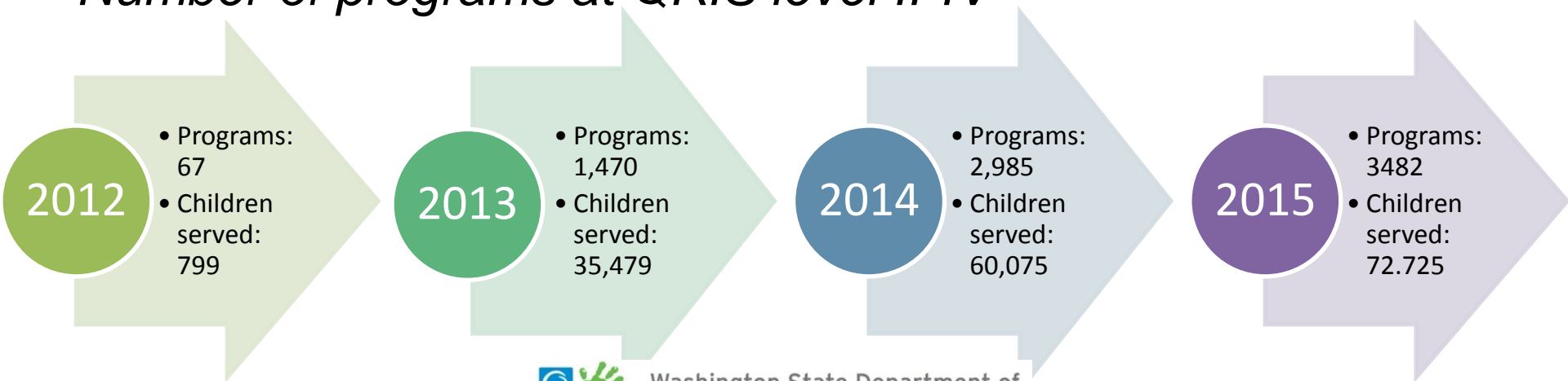
- ✓ By 2014-15 school year, WaKIDS will be scaled up to include all schools statewide
- ✓ In 2012-13, WaKIDS includes all FDK schools, and those funded through private P-3 efforts
- ✓ WaKIDS data linked to P-20 data system
- ✓ WaKIDS data being used to inform K-instruction, early learning instruction and statewide policy



What does success look like? QRIS

- ✓ All licensed child care, ECEAP, and Head Start eligible for QRIS (2012) at level 1
- ✓ By 2015, 54% of participants in QRIS will be level II or higher (20% of participants will be levels III-V)
- ✓ 60% of children in care will be in levels II-V
- ✓ Tiered reimbursement policy will support and incentivize quality improvement

Number of programs at QRIS level II-IV



What does success look like? PD

By 2015:

- ✓ More than 80% of early learning teachers will be entered into MERIT (the state professional development registry)
- ✓ 10% of professional annually will increase their MERIT level
- ✓ 20% of total work force have completed CDA or achieved step 5 on career lattice
- ✓ 30% of total work force will have completed AA degree or achieved step 9 on career lattice
- ✓ All state trainings and community college degree programs aligned to the Core Competencies

Quality Rating and Improvement System

www.del.wa.gov/care/qris

What is QRIS?

- ✓ Voluntary program to:
 - Help early learning programs (child cares, publicly funded preschools) improve quality
 - Offer consumer information to families (quality ratings)
- ✓ Currently funded with federal Child Care and Development Fund (CCDF) quality dollars
- ✓ Data system to be built with funding from Bill & Melinda Gates Foundation

Why do we need a QRIS?

The research is clear: High-quality early learning programs help prepare children for success in school and life.



Milestones in developing Washington's QRIS

2009-2011

"Seeds to Success" field test with Thrive by Five Washington

August 2011

Up to 60 early adopters begin using the final QRIS model

July 1, 2011
DEL begins adoption of final Washington QRIS model

July 1, 2012
QRIS expands depending upon resources

What we learned from the field test

- ✓ **Coaching, training and incentives make a difference.** In a short amount of time, facilities were able to increase their rating using evidence-based measures of quality.
- ✓ **Simple is better.** By simplifying the quality standards (using only evidence- and research-based quality indicators), cost is reduced and “buy-in” increases
- ✓ **Infrastructure is crucial.** Need to identify roles.

Washington QRIS roles

Q (Quality) – All agencies promote child care quality

R (Rating) – The University of Washington is the lead agency for evaluation, assessment and rating assignment

I (Improvement) – The Washington State Child Care Resource & Referral Network is the lead agency for coordinating improvement activities including coaching, technical assistance, professional development and training

S (System) – DEL is the lead administrative agency for systems development and integration

QRIS roles in Washington



Adverse childhood experiences

Adverse childhood experiences (HB 1965)

- ✓ Transfers Council for Children and Families early learning functions to DEL
 - DEL, CCF working on transition plan due to Legislature by January 1, 2012
- ✓ Requires DEL, DSHS to actively participate in development of nongovernmental private-public initiative to coordinate investments in preventing, mitigating effects of adverse childhood experiences

Child care updates

www.del.wa.gov/care

Child care licensing improvements

- ✓ Beginning April 2011, child care licensing is done electronically
- ✓ Ensures better consistency
- ✓ Yields rich data to improve policy and practice:
 - ✓ Most frequently cited issues—signals where we need to work most closely with child care providers
 - ✓ DEL can post compliance agreements on Child Care Check for families to see

Nonexpiring licenses (SB 5625)

- ✓ Beginning July 22, 2011, state moved to nonexpiring child care license
- ✓ Paperwork reduction measure—providers no longer required to reapply every three years
- ✓ Providers must submit on time:
 - Annual licensing fee
 - Declaration of compliance
 - Background check applications
- ✓ DEL still monitors:
 - Family homes at least once every 18 months
 - Centers at least once every 12 months

Portable background checks (HB 1903)

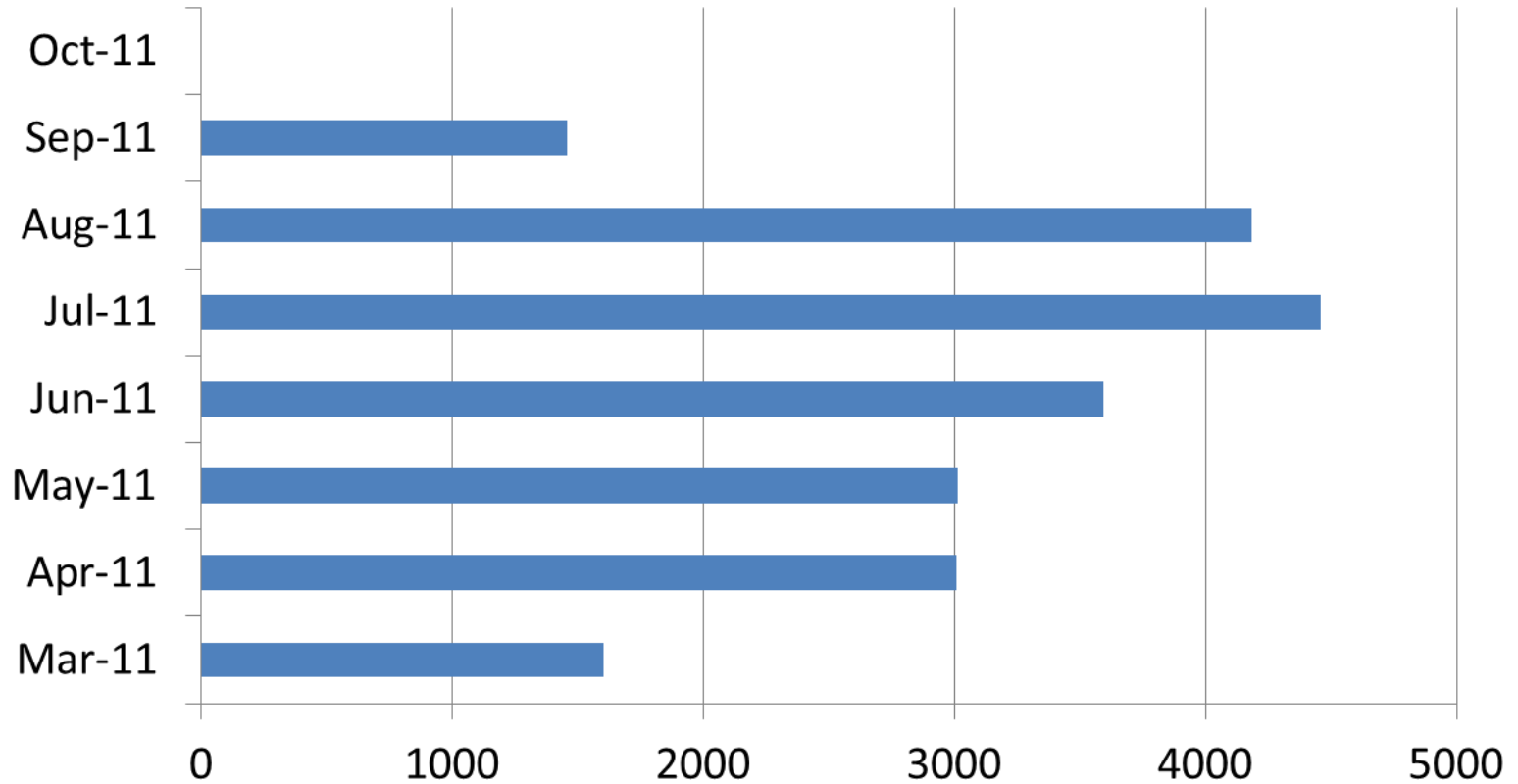
- ✓ 3-year portable background check: July 2012
- ✓ Efficiency:
 - Child care workers can work in more than one facility with same cleared background check
 - Licensees will be able to quickly check background check clearance of new staff, volunteers
- ✓ Safety:
 - Everyone applying for first-time DEL background check clearance must be fingerprinted, have national background check (previously only those who had lived in WA fewer than 3 years).
- ✓ One-time fee of \$45 assessed on all licensees to build registry
- ✓ Child care workers pay their own fee

Working Connections Child Care subsidy program

- ✓ Helps families with low incomes pay for care while working or meeting WorkFirst participation requirements
- ✓ Enrollment cap at 33,000 households
- ✓ Applicants above cap are placed on wait list (began March 1, 2011)

Working Connections Child Care

Average number of households on wait list



Data through October 6, 2011

Seasonal Child Care subsidy program

- ✓ Helps families pay for child care while working in agricultural settings
- ✓ Application process changes:
 - Families can apply in person, by phone, online, by fax
- ✓ Eligibility changes:
 - Child receiving subsidy must legally reside in the U.S.
 - Income verification policy changed to allow more flexibility for families:
 - Before: Income average over 12 months
 - Now: Income average over 3 months, previous year's W-2 or employer's statement

Seasonal Child Care outreach

✓ Mobile community service office visits to:

- Mount Vernon
- Pasco
- Mattawa
- Wenatchee
- Kennewick
- Sunnyside
- Oroville
- Omak



✓ DSHS eligibility workers trained on new policies

✓ DSHS developing cultural competency training for staff

✓ Contract with WithinReach

Medicaid Treatment Child Care program

- ✓ Transferred to DEL in 2011-13 state operating budget
- ✓ Focus is on serving children at-risk of child abuse and neglect
- ✓ Children referred by Children's Administration, Economic Services Administration (TANF), and public health
 - Therapeutic play in a quality setting, monthly home visits, family education and support
- ✓ 2 Programs: Childhaven (King County) and EPIC (Yakima County)
- ✓ DEL's focus: support integration of MTCC into early learning system

Home visiting

www.del.wa.gov/development/visiting

www.thrivebyfivewa.org/hvsa.html



Washington State Department of
Early Learning



Thrive by Five[™]
WASHINGTON

Home visiting in Washington

- ✓ Key strategy in state Early Learning Plan
- ✓ Voluntary program matching trained professionals with families vulnerable to stress, risk factors
- ✓ Home-based support from prenatal through age 5
- ✓ Key benefits:
 - Stronger parent/child bonds
 - Healthier mothers and babies
 - Lower rates of child abuse and neglect
 - More positive parenting practices
 - Earlier development of literacy, language skills
 - Higher rates of school readiness
 - Safer homes
 - Increased rates of employment

Home visiting: Funding

- ✓ Home Visiting Services Account (HVSA)
 - State, private funding leveraged
 - Thrive by Five Washington administers
- ✓ Federal Maternal, Infant and Early Childhood Home Visiting (MIECHV) program
 - \$1.3 million for FFY10
 - \$1.8 million for FFY11
 - WA did not receive a competitive grant for FFY11

Communities served by HVSA in 2011-12

(selected through competitive bid)

- ✓ MultiCare Health Systems (Tacoma)
- ✓ Neighborhood House (Seattle)
- ✓ Children's Home Society of Washington (Spokane)
- ✓ St. James Family Center (Cathlamet)
- ✓ Spokane Regional Health
- ✓ Tacoma Pierce County Health Department
- ✓ Thurston County Public Health and Social Services
- ✓ Yakima Valley Memorial Hospital
- ✓ King County Public Health
- ✓ Catholic Family and Child Services

Communities served by MIECHV in FFY10-11

(selected based on DOH 2010 needs assessment)

- ✓ Pierce County
- ✓ Snohomish County
- ✓ Yakima County
- ✓ South King County
- ✓ Pend Oreille County *
- ✓ Clallam County *

* Added with FFY11 funding

Frontiers of Innovation

www.developingchild.harvard.edu



Center on the Developing Child  HARVARD UNIVERSITY



Stay connected!
www.del.wa.gov



DEL Blog



DEL Twitter



DEL Facebook



DEL Listserv



Washington State Department of
Early Learning