



Washington State Department of
Early Learning

Race to the Top – Early Learning Challenge

October 2011



Today

- ✓ Overview of RTT-ELC Application
- ✓ Goals & challenges in writing the application
- ✓ RTT-ELC budget
- ✓ Success in 2015:
 - ✓ WaKIDS
 - ✓ QRIS
 - ✓ Professional Development

Goals of the grant

- \$60 million from 2011-2015
- Announcement in early December, award by Dec. 31
- Build systems, not fund services
- Show integration across programs, agencies, and populations
- Birth to Five
- Accountability rests with States: help States move forward, but not supplant state resources
- Catalytic: the process of competing should help all states move forward, even those that don't win

Priorities, Requirements, & Selection Criteria

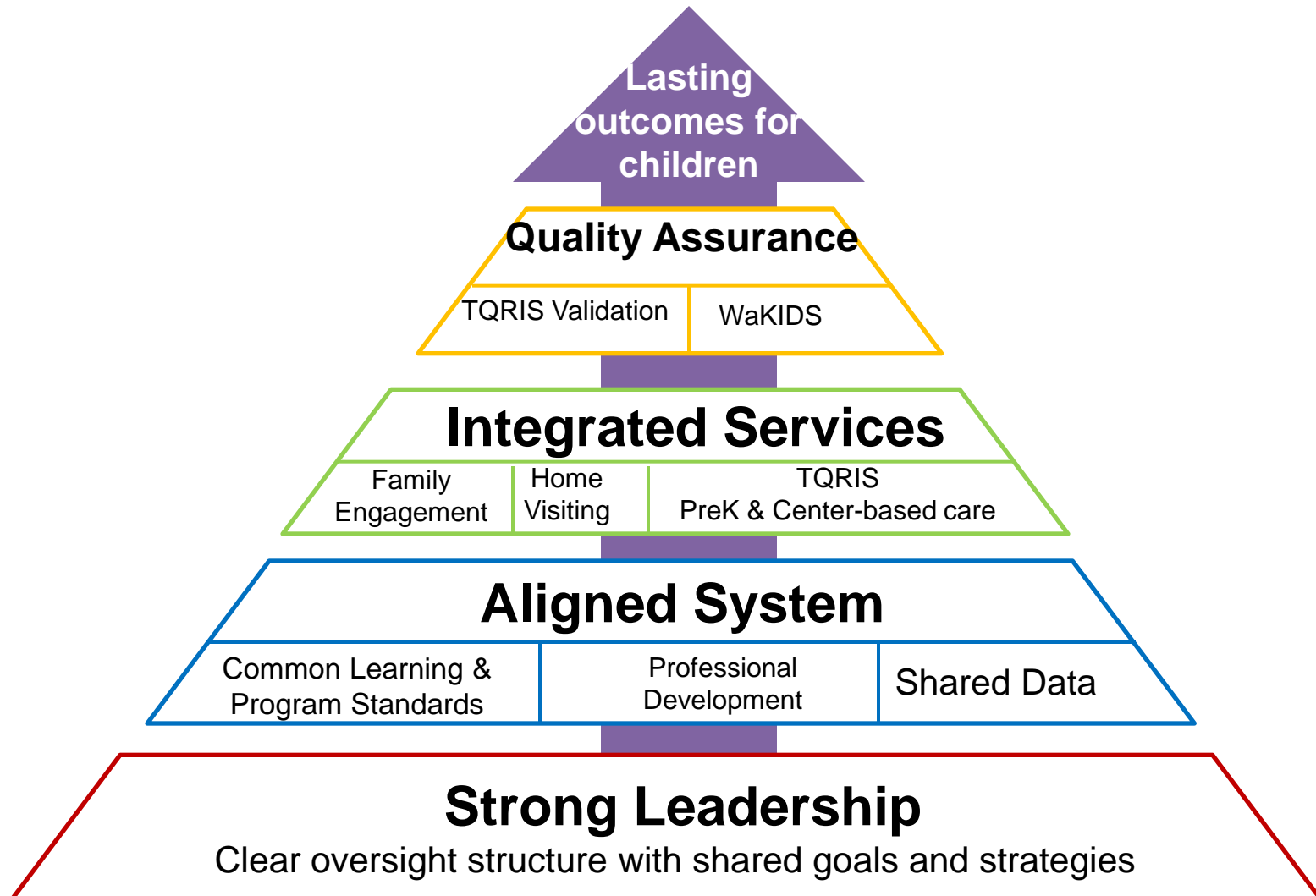
Early Learning Challenge Points Overview	Points Available	Percentage
A. Successful State Systems	65	23
B. High-Quality, Accountable Systems	75	27
C. Promoting Early Learning & Development Outcomes for Children	60	21
D. A Great Early Childhood Education Workforce	40	14
E. Measuring Outcomes and Progress	40	14
Total points available for selection criteria	280	100
Competitive Priority 1: Including all early learning & development programs in the QRIS	10	
Competitive Priority 2: Understanding status of learning & development at Kindergarten entry	10	
Grand Total	300	

Race to the Top - Early Learning Challenge

Our Process

- ✓ Early Learning Plan as foundation
- ✓ Crosswalk application with Washington's goals – where are we going with or without RTT-ELC
- ✓ Outreach:
 - ✓ State Leadership Team (DEL, OSPI, DOH, DSHS, Thrive)
 - ✓ RTT-ELC Advisory Group
 - ✓ Small group meetings (Preschool-third grade alignment, home visiting, professional development, advocates, Quality Rating and Improvement System)
 - ✓ Presentations & Updates

Washington's RTT-ELC Theory of Change



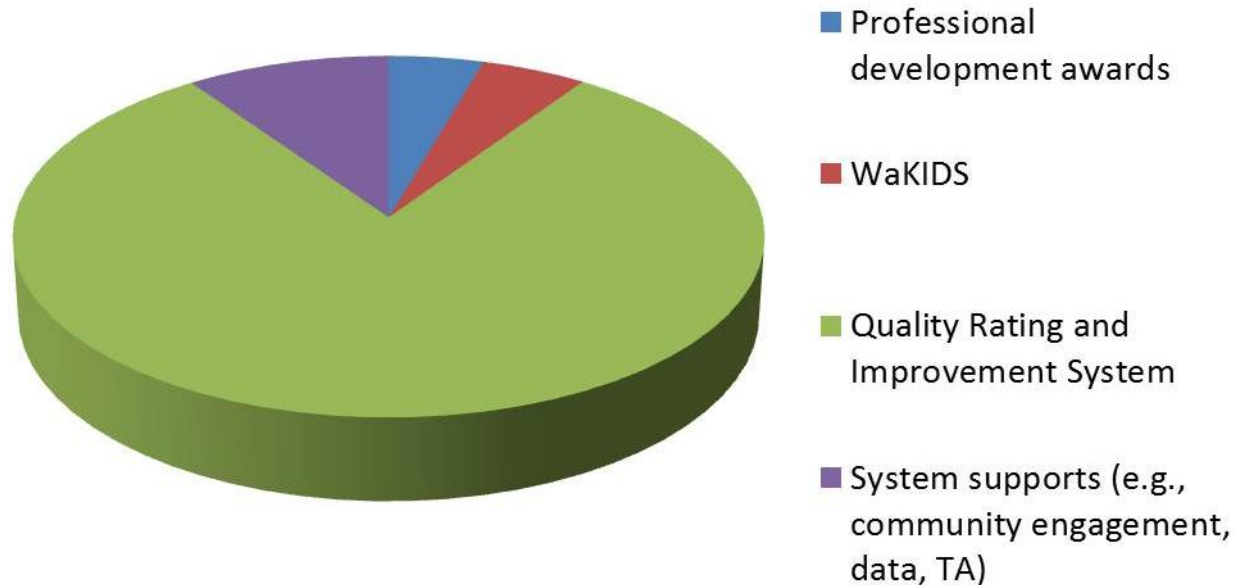
Challenges in building the application

- ✓ Tough choices
 - Balance of state/fed request
 - One time versus ongoing
 - Points
- ✓ Building on limited infrastructure (e.g. data)
- ✓ Think about “bow wave”
- ✓ Show zero increase in state investment during grant period
- ✓ Complexity of the process

What's in the application?

- ✓ Washington Kindergarten Inventory of Developing Skills (WaKIDS)
 - ✓ Reach all kids by 2014-15 school year
- ✓ Quality Rating and Improvement System (QRIS)
 - ✓ At scale statewide by 2015, support quality improvements at all levels
- ✓ Professional development incentives
 - ✓ Reward, incentivize and support professional development
- ✓ Community and family engagement
- ✓ Strengthened data system

What would \$60 million “buy” WA?



- ✓ Application needed to demonstrate state commitment to early learning
- ✓ Washington’s proposal is lean, and relies most heavily on repurposing existing dollars.
- ✓ Does not require the state to increase funding for early learning during the grant period (1/1/2012 through 12/31/2015)
- ✓ Some modest increases in state revenue are projected after the grant period.

RTT-ELC budget—QRIS

Rating & Monitoring

\$6.3M

Support to get everyone into the QRIS system and move them up to a Level II over time

Coaching, Training, & TA

\$19.2M

Improvement activities

Quality Improvement Awards

\$7.75M

Rewards for quality in levels III-V

Training Hub Incentive Awards

\$8.9M

Reward to HS/ECEAP for opening up trainings to local child care

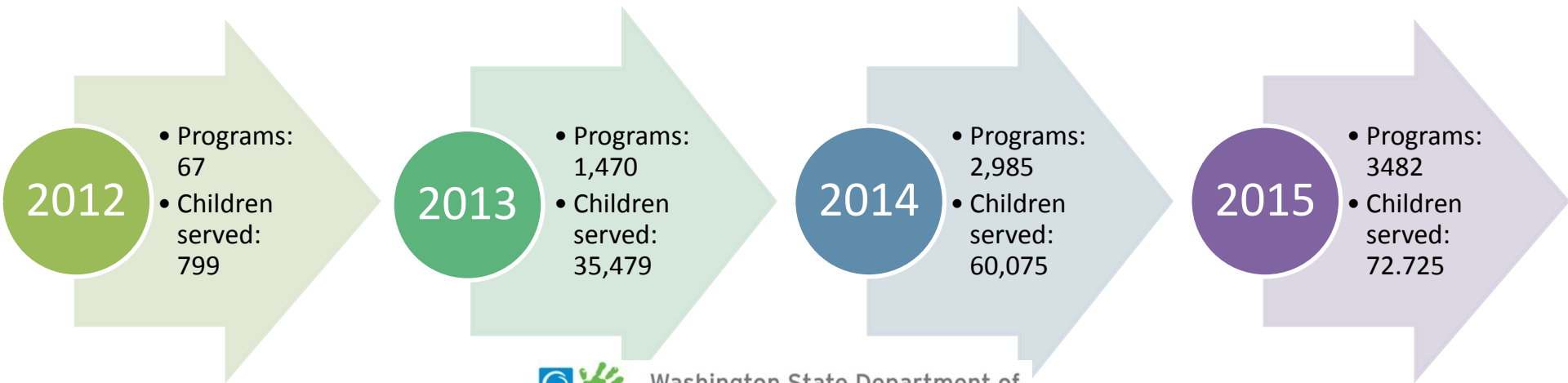
Program Evaluation

\$1.6M

5% of program costs to improve system

What does success look like in 2015 for QRIS?

- ✓ All licensed child care, ECEAP, and Head Start eligible for QRIS (2012) at level 1
- ✓ By 2015, 54% of participants in QRIS will be level II or higher (20% of participants will be levels III-V)
- ✓ 60% of children in care will be in levels II-V
- ✓ Tiered reimbursement policy will support and incentivize quality improvement



RTT-ELC budget—Other

WaKIDS

\$2.3M

Scale WaKIDS by 2014-15

Professional Development Incentives

\$5.75M

Encourage participation in MERIT, level awards for educational attainment

System Supports

\$8.2M

Community Engagement

\$600K

Information/Material Dev

\$2M

Data

\$4.5M

Administration

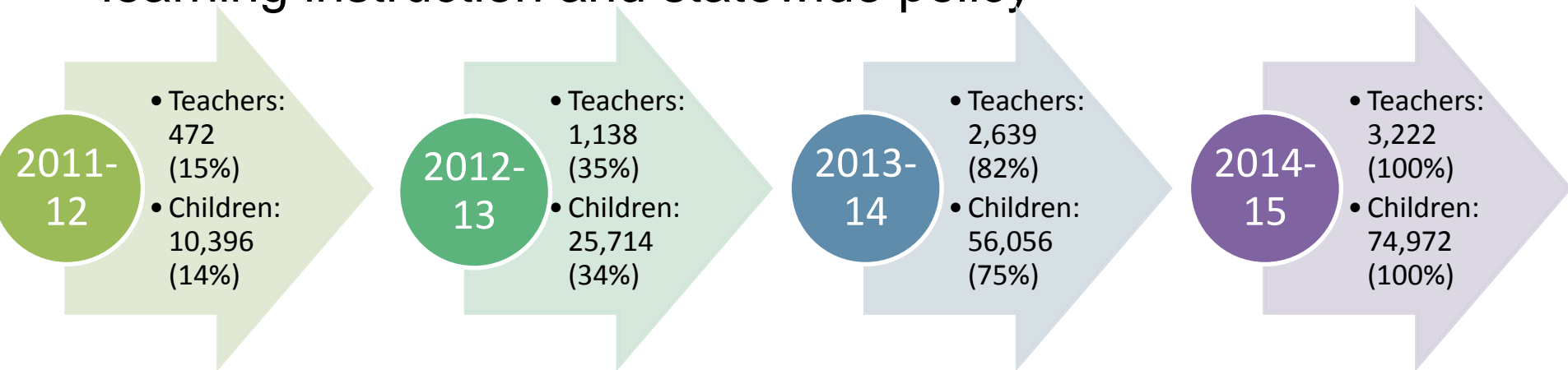
\$700K

T/A (Required minimum)

\$400K

What does success look like in 2015 for WaKIDS?

- ✓ By 2014-15 school year, WaKIDS will be scaled up to include all schools statewide
- ✓ In 2012-13, WaKIDS includes all FDK schools, and those funded through private P-3 efforts
- ✓ WaKIDS data linked to P-20 data system
- ✓ WaKIDS data being used to inform K-instruction, early learning instruction and statewide policy



What does success look like in 2015 for PD?

- ✓ More than 80% of early learning teachers will be entered into MERIT (the state professional development registry)
- ✓ 10% of professional annually will increase their MERIT level
- ✓ 20% of total work force have completed CDA or achieved step 5 on career lattice
- ✓ 30% of total work force will have completed AA degree or achieved step 9 on career lattice
- ✓ All state trainings and community college degree programs aligned to the Core Competencies



Stay connected!
www.del.wa.gov



DEL Blog



DEL Twitter



DEL Facebook



DEL Listserv



Washington State Department of
Early Learning